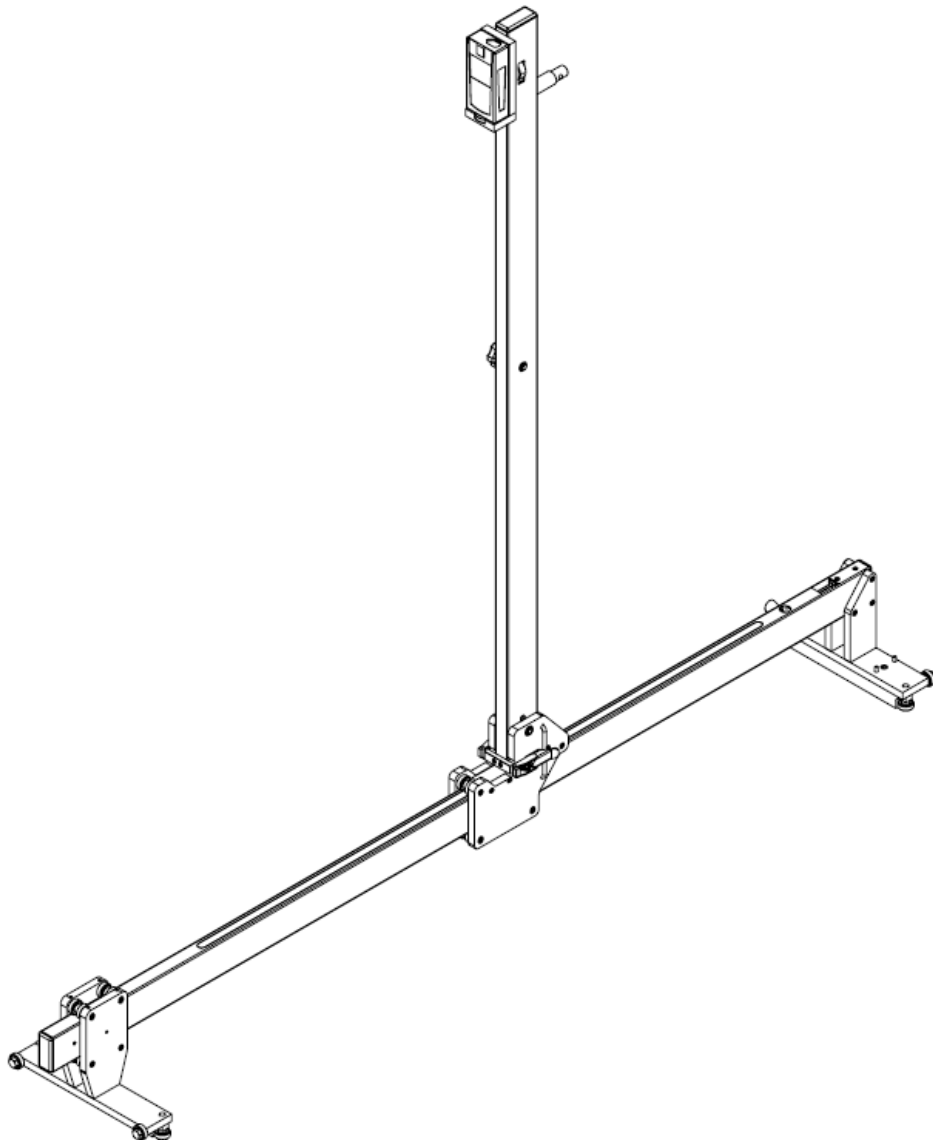




ABT4640 Laser Height and Stagger Gauge



Instruction Manual

1.0 Index

1.0	Index	1
2.0	Item List	2
3.0	Specification	2
4.0	Getting Started	3
4.1	Overview	3
4.2	Assembly	3
4.3	Operating the Laser	4
4.4	Measuring Height and Stagger	4
4.5	Measuring Super Elevation	4
4.6	Measuring REFOS	5
5.0	Maintenance	6
5.1	Before Each Use	6
5.2	Every 3 Months	6
5.3	Annual	6
6.0	Trouble Shooter	7
6.1	Super-Elevation is not showing or is incorrect	7
6.2	Incorrect icon is displayed on the laser unit	7

2.0 Item List

1. Height and Stagger Gauge
2. REFOS Bracket
3. Hilti PD 42 Laser
4. Instruction Manual
5. Hilti Documentation

3.0 Specification

Weight	-	6.0kg
Dimensions	-	Length: 1450mm Height: 1495mm Width: 450mm
Measures Cable Stagger	-	Range: ± 520 mm Accuracy: ± 10 mm @ 5m Resolution: 0.1mm
Measures Cable Height	-	Range: 2m to 100m Accuracy: ± 3.0 mm Resolution: 0.1mm
Measures Super-Elevation	-	Range: ± 160 mm Accuracy: ± 1.0 mm Resolution: 0.1mm
Measures REFOS		Range: 2m to 100m Accuracy: ± 3.0 mm Resolution: 0.1mm

Features

- 1 Fully insulated
- 2 Expected Battery Life—1 year
- 3 Carry/Storage Case
- 4 Back Light on laser display for Night/Tunnel work
- 5 Auto Power-Off

Getting Started

3.1 Overview

The ABT 4640 is a light-weight gauge that allows the user to safely take Height and Stagger measurements of the OHL (Over Head Line) using laser technology. Super-Elevation (SE) and Rail Edge to Face of Structure (REFOS) can also be measured

The laser unit is positioned at eye-level and features a 90° viewing prism, enabling the operator to easily

set the laser location marker onto the OHL in all weather conditions including bright sunshine. The Height reading is displayed on an illuminated LCD screen on the laser. Stagger position is indicated on a reflective scale for ease of use at night as well as day.

SE is displayed on an illuminated LCD screen and REFOS is measured by transferring the laser unit to a separate bracket¹.

The vertical beam folds down flat to the horizontal beam for storage and transport.

3.2 Assembly

1. To release the vertical beam, pull the lever towards you (See Figure 1). Lift the vertical beam until it rests against the stop. Release the toggle latches and fasten securely to the vertical beam (shown in Figure 2).
2. Place the laser unit into the holder at the top of the vertical beam and fix in place using the screw provided
3. Screw the REFOS bracket to the rail foot of the

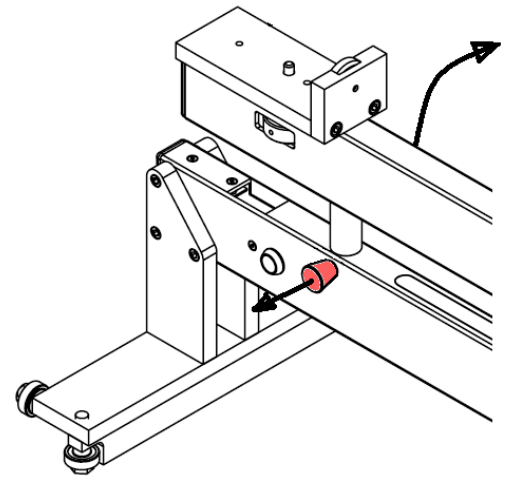


Figure 1

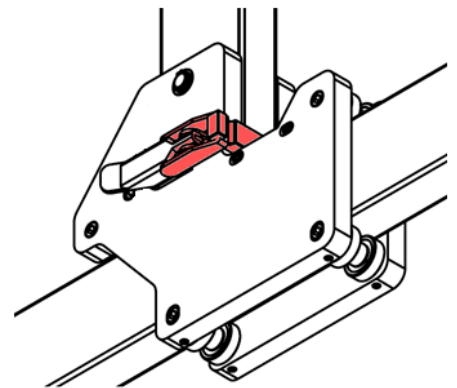


Figure 2

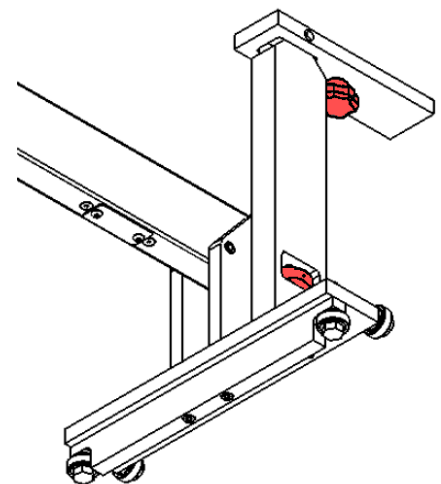


Figure 3

¹ Additional laser units can be purchased to remove the requirement to swap laser positions when measuring REFOS

gauge. The REFOS bracket may be fitted to either side of the gauge as required (see Figure 3)

3.3 Operating the Laser


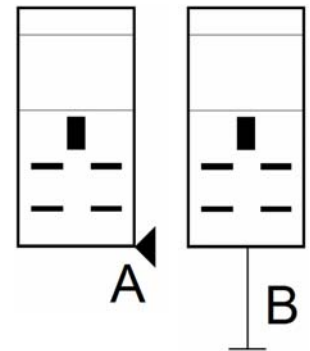
1. Switch on the laser by pressing the  situated at the top right hand corner of the unit
2. One of two icons (shown in Figure 4) will be displayed in the top left of the screen which represents the point from which the laser measurements will be taken. Icon 'A' should be shown when the laser unit is mounted on the REFOS bracket and Icon 'B' should be shown when placed in the top holder

Figure 4




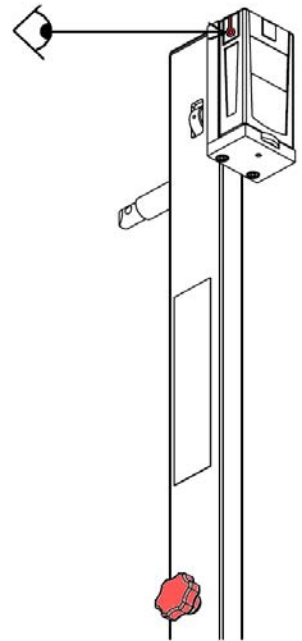
3. Press the  button to reveal the laser location marker (visible red laser beam). Press the same button to take the measurement, which will appear in the bottom right corner of the screen.

Figure 5

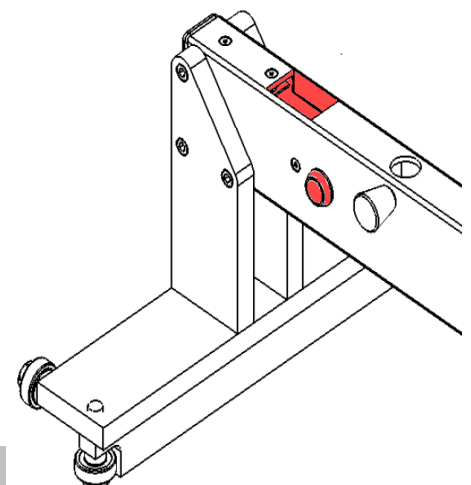


3.4 Measuring Height and Stagger

1. Ensure vertical beam is in the operating position and that the laser is secured (as described in section 3.2).
2. With the laser location marker activated, look through the viewing hole of the laser unit (shown in Figure 5). This will allow you to see when the laser is in line with the OHL.
3. The vertical beam can be moved from side to side

by turning the stagger adjustment wheel located in the centre of the vertical beam (shown in figure 5). When the Over head cable is in line with the laser the amount of cable stagger can be read from the scale on the upper side of the horizontal beam.

Figure 6



3.5 Measuring Super Elevation

- 1 To measure super elevation press the white button at the left end of the gauge, a

- measurement will appear on the screen above the white button (see Figure)
- 2 After pressing the white button, the sensor requires approximately 10 seconds to stabilise. In order to save battery power, the screen will automatically switch off after 50 seconds
 - 3 A positive SE reading is when the right rail is higher than the left

3.6 Measuring REFOS

1. Secure laser unit to REFOS bracket (see Figure)
2. Use the spirit level on the laser unit to ensure it is level before taking the measurement

4.0 Maintenance

4.1 Before Each Use

- 1 Check that the bearing surfaces that are in contact with the rail are clean and can move freely
- 2 Ensure that the vertical beam locks firmly into place

4.2 Every 3 Months

- 1 Visually check for damage
- 2 Ensure that there are no flat spots on the bearing surfaces in contact with the rail

4.3 Annual

To ensure that the accuracy of your ABT4640 remains within specified limits, it should be returned to your local distributor for annual re-calibration.

5.0 Trouble Shooter

5.1 Super-Elevation is not showing or is incorrect

Try replacing the battery (9V PP3). Remove the battery cover on the underside of the horizontal beam and carefully unplug the existing battery.

5.2 Incorrect icon is displayed on the laser unit

The laser unit senses a magnetic field to select the correct icon – check that a magnet is present in the base of the top holder. See the Hilti documentation for information on how to manually change the icon.